

# AYAMONTE HOMES



---

AFFORDABLE INVESTMENT OPPORTUNITY  
Charming Houses in a Private Gated Community

---



# AYAMONTE HOMES

Nestled within an idyllic and tranquil corner of the Costa Esuri development, above the meandering Guadiana River, the community comprises solely of exceptionally designed townhouses and villas.





## COSTA ESURI

Costa Esuri which, at the forefront of new developments in the area, combines a 36 hole golf resort with attractive, well planned property developments.

The urbanisation is situated right next to the city of Ayamonte, and it is designed as an independent village with various developmnets with apartments, townhouses, plots and villas





# AYAMONTE HOMES

322 days of sunshine per year.

Annual average temperature 18.5°C  
(Maximum average 25.4°C in August, average minimum of 11.9°C in January)





## Location

Located on the outskirts of Ayamonte, between Huelva and Punta Umbria, Costa Esuri enjoys a strategic position just 55 km from the city of Huelva and neighboring Spain's border with Portugal. The development boasts extraordinary natural beauty and offers excellent transportation connections to Faro and Seville airports. With its ambitious plans, Costa Esuri is set to become one of the most significant real estate projects along the Andalusian coast.

● Ayamonte Centre	Drive	7 min
● Isla Canela Golf	Drive	12 min
● Isla Canela Beach	Drive	15 min
● Isla Cristina Beach	Drive	30 min
● Vila Real del San Antonio	Ferry	15 min
● Highway Connection	Drive	5 min
● El Faro Airport	Drive	45 min
● Huelva	Drive	1 hour
● Seville	Drive	1.5 hour



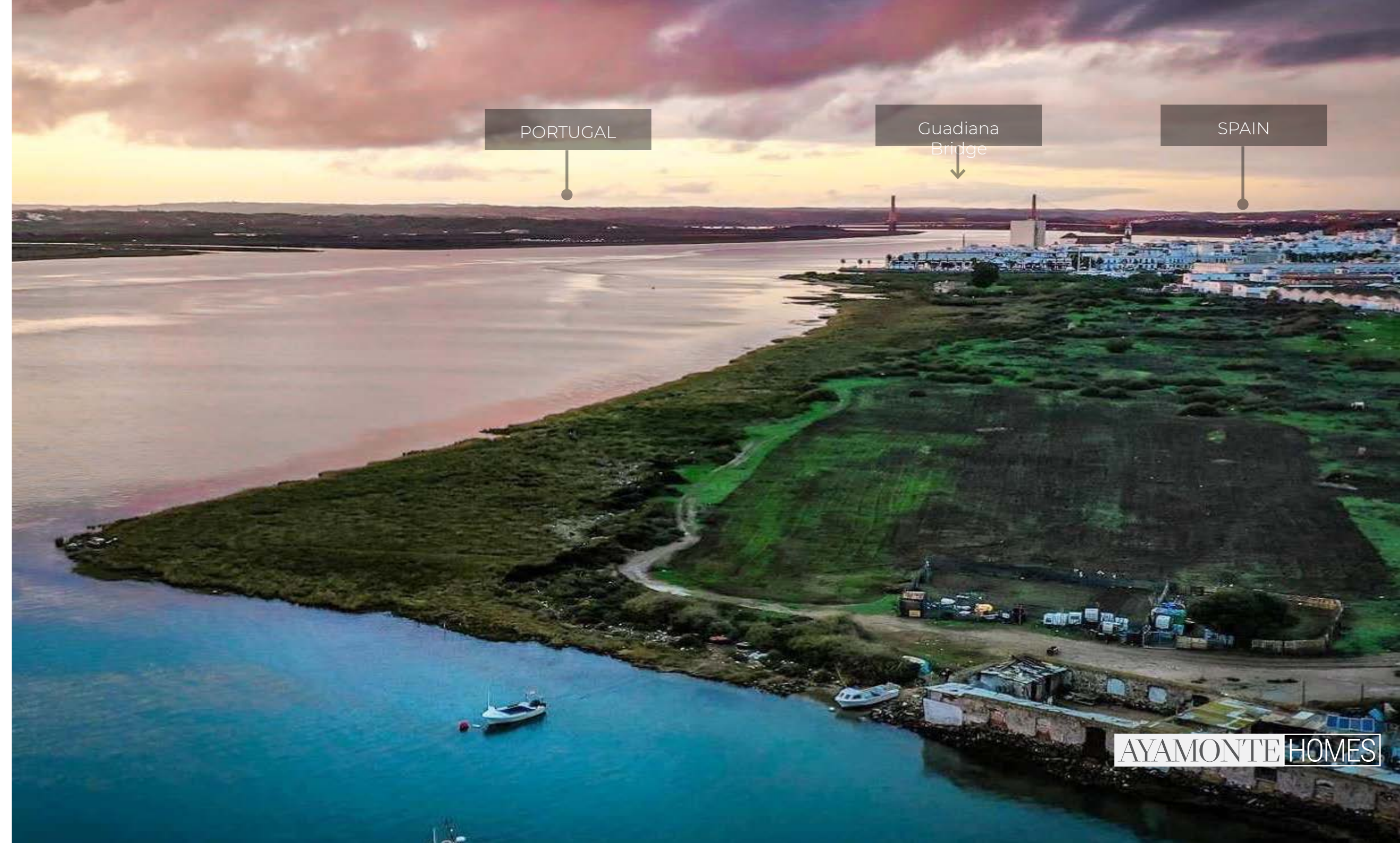


## Surrounded by natural wealth and culture

A modern bridge over the Guadiana River has now been built to the north of the town, linking the motorway systems of the two countries, but the ferry still runs and provides an inexpensive mode of transport between the two countries.

The current settlements can be traced back to prehistoric times, but the Romans and Moors expanded the area and their footprint is left in the evidence of older buildings in all the local towns and harbors.

Up to 200 different species of fish can be found in these Atlantic waters and alongside the estuary of Guadiana River.





## The wonders of the Atlantic Coastline

The beaches are among the best in Europe, covered in white fine sand, safe for children and very romantic.

There is plenty to enjoy in this amazing landscape for amateur nature lovers, and experts will be thrilled by the variety, intensity and quality of the wildlife.

Exploring the protected paths around La Doñana national park gives you the chance to see some of the most endangered species on the planet, like the Spanish imperial eagle and the Iberian lynx.



AYAMONTE HOMES



# AYAMONTE HOMES

The community comprises solely of exceptionally designed townhouses and villas, 225 homes in total, attractively positioned over 15 acres of rolling countryside.





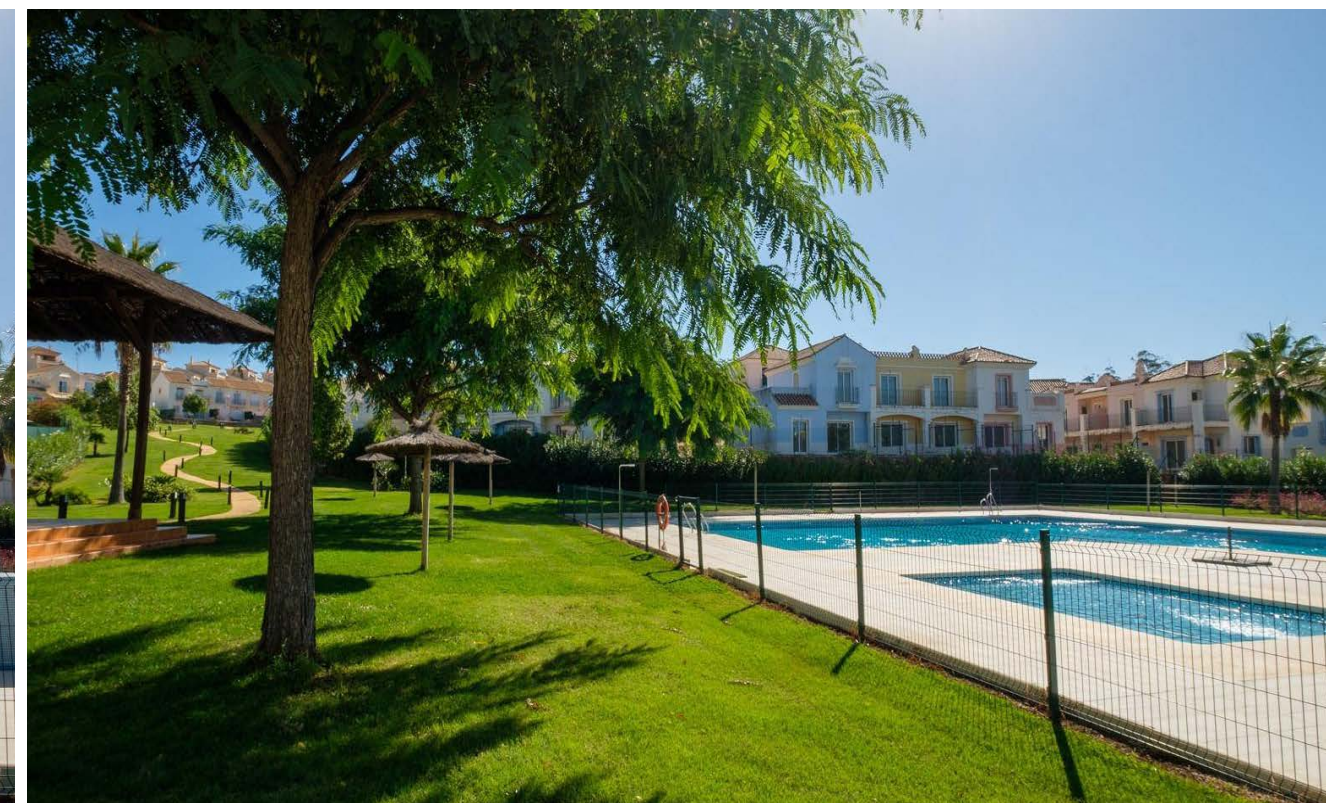
# AYAMONTE HOMES

Nestled within an idyllic and tranquil corner of the Costa Esuri development, above the meandering Guadiana River, the community comprises solely of exceptionally designed townhouses and villas.





# AYAMONTE HOMES

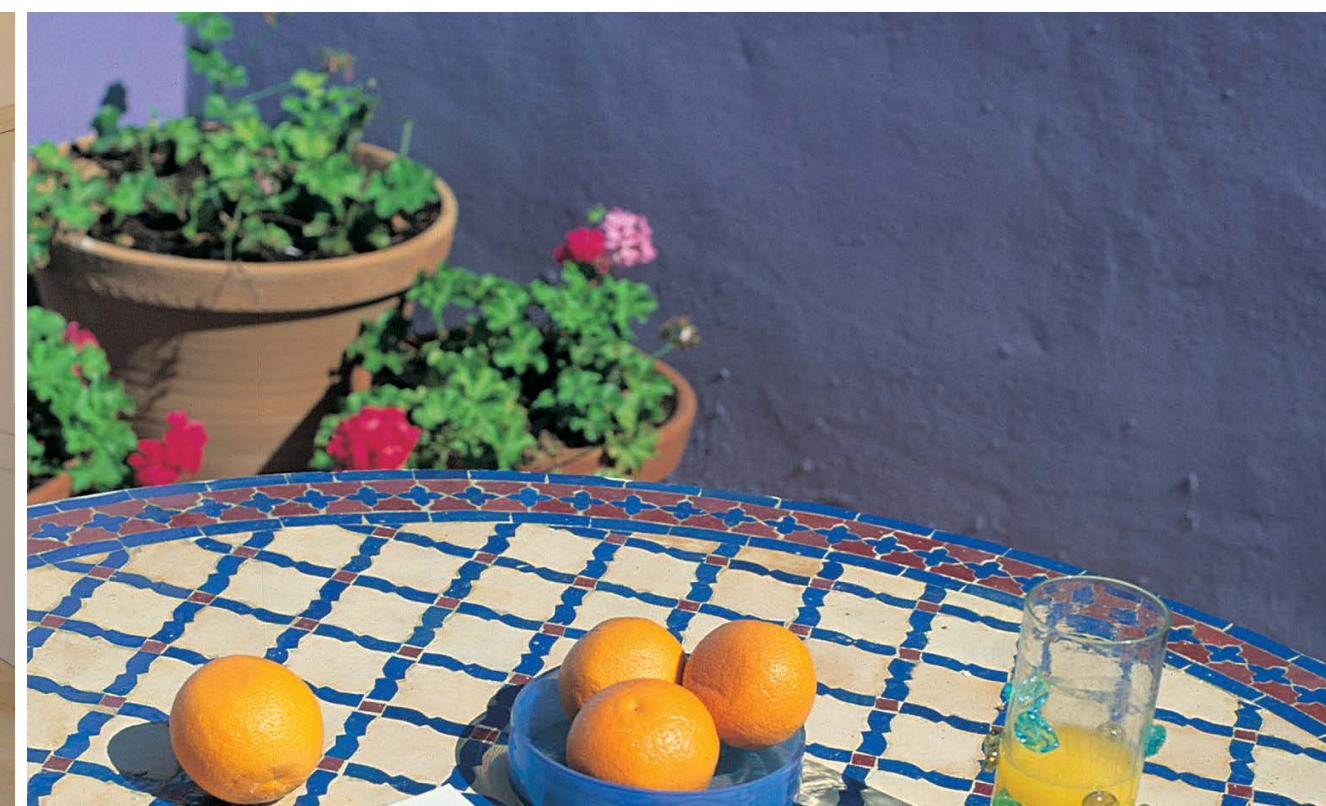
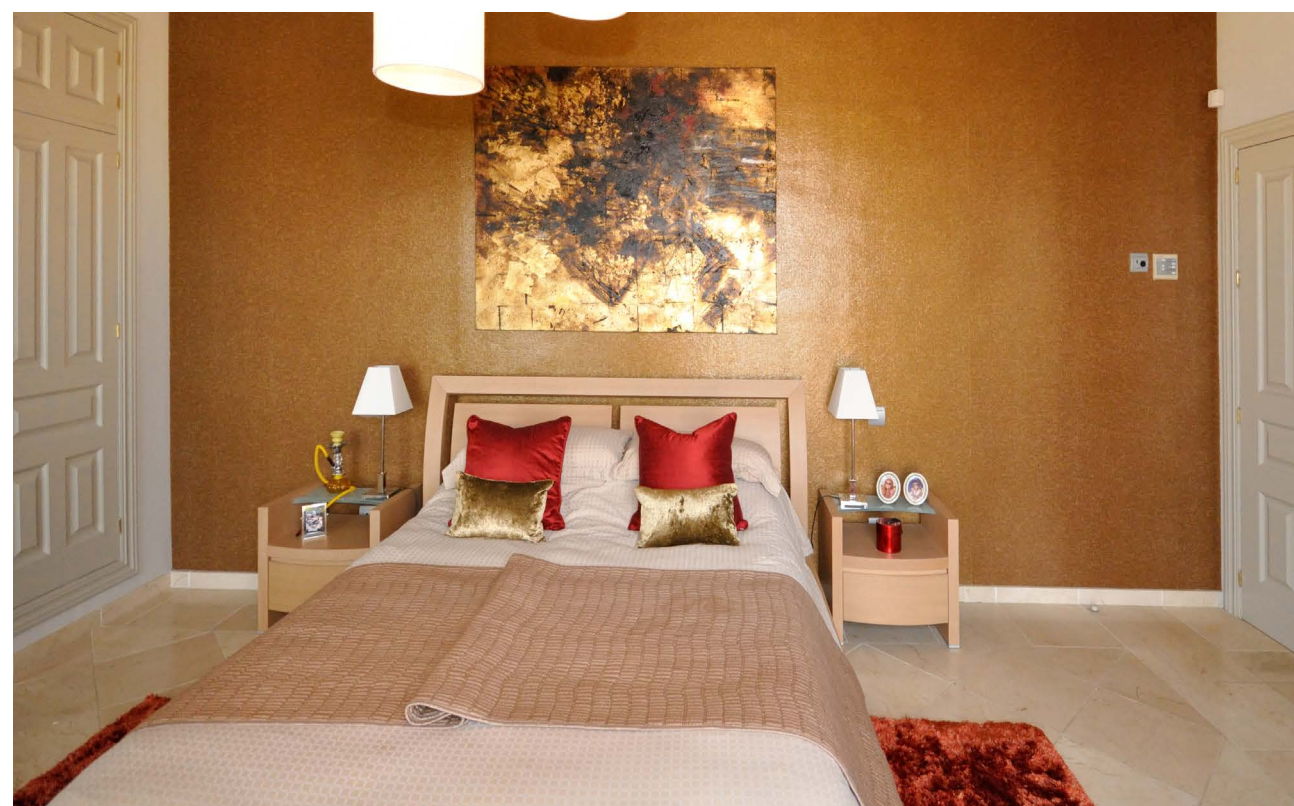


- Gated community
- Beautiful landscaped communal areas
- Luxurious pool complex with children's pool, adult pool
- Children's play area
- Chiringuito
- Paddle tennis courts
- Private off road parking for residents
- Exceptional planning to maximise property privacy
- Nestled in idyllic, tranquil location with views across the Spanish and Portuguese countryside



# AYAMONTE HOMES

The properties range from 2, 3 and 4 bedrooms; all have private gardens and excellent terrace areas. The homes are built to a high specification including the features of intercom system, pre installation of air conditioning, integrated wardrobes and marble tiling on the interior.

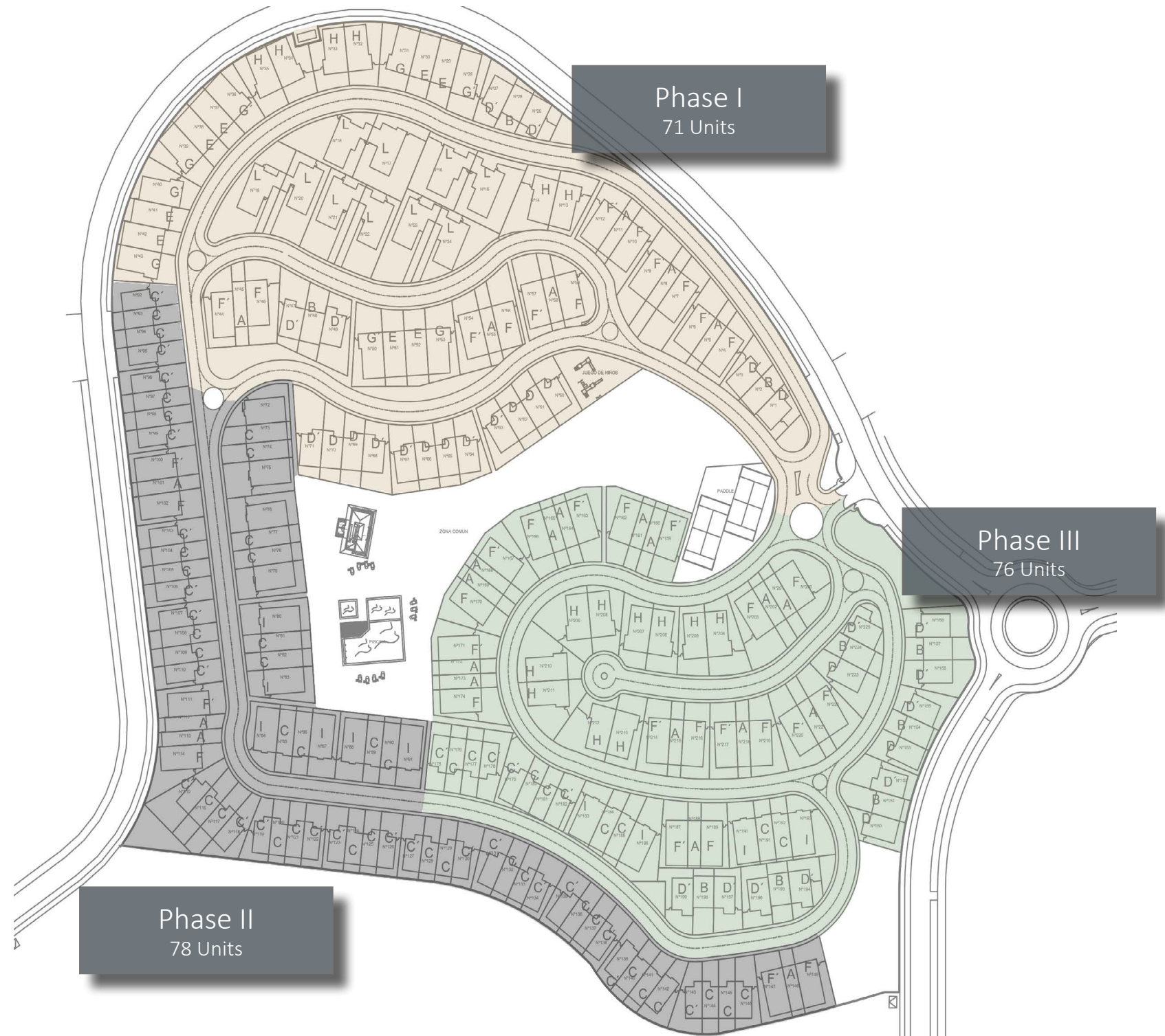






AYAMONTE HOMES





The community comprises solely of exceptionally designed town-houses and villas, 225 homes in total, attractively positioned over 15 acres of rolling countryside.



AYAMONTE HOMES



# AYAMONTE HOMES

\*Disclaimer: In regard to property plans, artist's impressions, and quality specifications. All property fact sheets, m2 profiles, renders and visuals can be amended by the developer due to changes made by architects or technicians for structural reasons or technical problems resolved during the construction, and/or availability of materials.