



PINE HILLS



Sophisticated Living
Costa Esuri

The Spanish Atlantic...

The most exceptional residential touristic area.

PINE HILLS villas are located on plots that make use of an outstanding location.

The villas are set on rolling hills, covered by Pine Trees, and open views over the golf course, river and unspoilt areas of farmlands.

This private location remains quiet and exclusive all year round and is the ideal home for someone wanting to avoid traffic and the over-built surroundings of other touristic areas.



The Opportunity

In AYAMONTE HOMES, we realize the importance of providing a high quality product which meets and reflects an individual client's needs.

This is particularly important in residential projects, where, in the vast majority of cases, the product will become the client's home.

However, attention needs to be drawn to the fact that real estate property is also an investment. Hence, our product which will fulfil both residential and real estate market requirements.

In other words, our projects are both homes and sound investments.



Our Goal

Our team is focused on how we make a difference and add value.

This begins by finding exceptional plots.

For 30 years we have been helping clients make their dream homes.

PINE HILLS enables us to take control of the final home, its design, affordability, quality and aftersales services.

This much-anticipated property development release brings a brand new luxury real estate offering to an established area with a vibrant community.

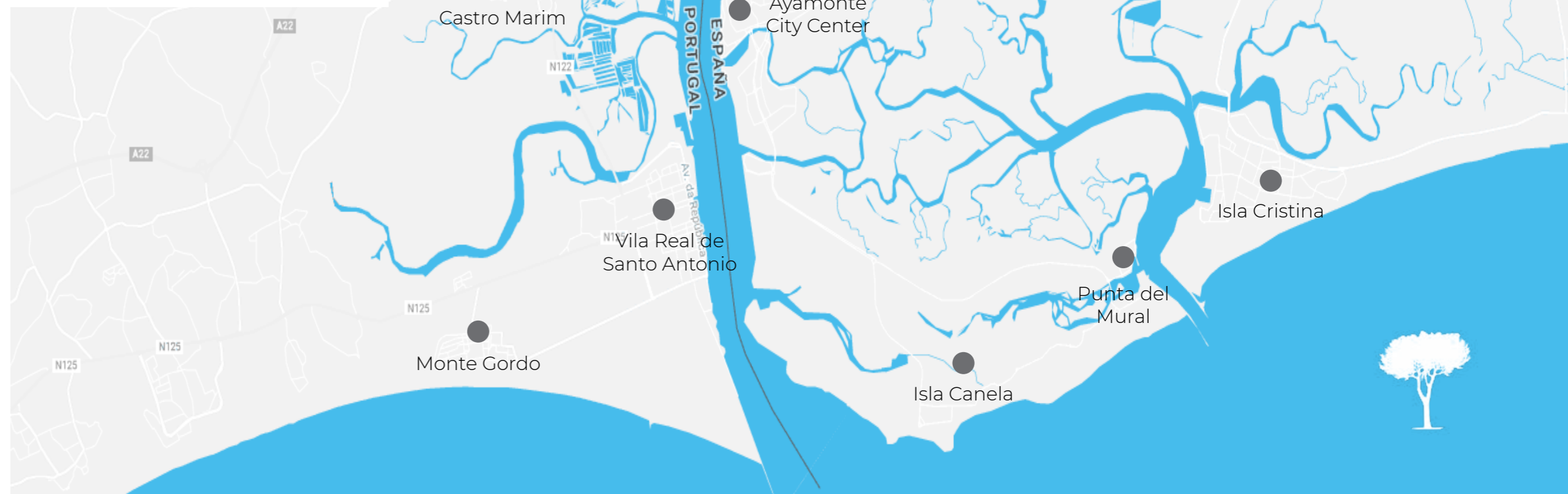
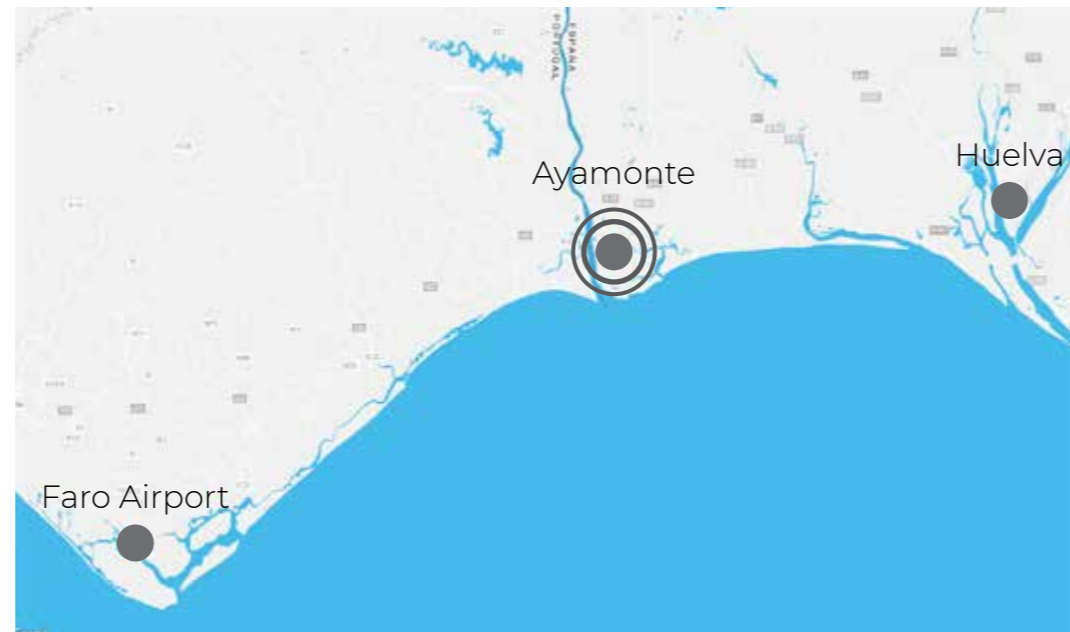
Ayamonte is a beautiful, convenient location at the heart of the Atlantic coastline, sitting on the border between Spain and Portugal.



Location

Its location on Spain's south western tip, only separated from the Portuguese Algarve by the river Guadiana, guarantees that COSTA ESURI is surrounded by number of wonderful places for visits, sports and outings. It is linked to the rest of Spain and Portugal by motorway and is only 50km from Faro international airport

● Costa Esuri Golf Course	Drive	2 min
● Ayamonte Centre	Drive	10 min
● Isla Canela Beach	Drive	15 min
● Isla Cristina Beach	Drive	30 min
● Vila Real del San Antonio	Ferry	10 min
*from Ayamonte town		
● Highway Connection	Drive	5 min
● El Faro Airport	Drive	45 min
● Huelva	Drive	1 hour
● Seville	Drive	1.5 hour



The wonders of the Atlantic Coastline

The beaches are among the best in Europe, covered in white fine sand, safe for children and very romantic.

There is plenty to enjoy in this amazing landscape for amateur nature lovers, and experts will be thrilled by the variety, intensity and quality of the wildlife.

Exploring the protected paths around La Doñana national park gives you the chance to see some of the most endangered species on the planet, like the Spanish imperial eagle and the Iberian lynx.

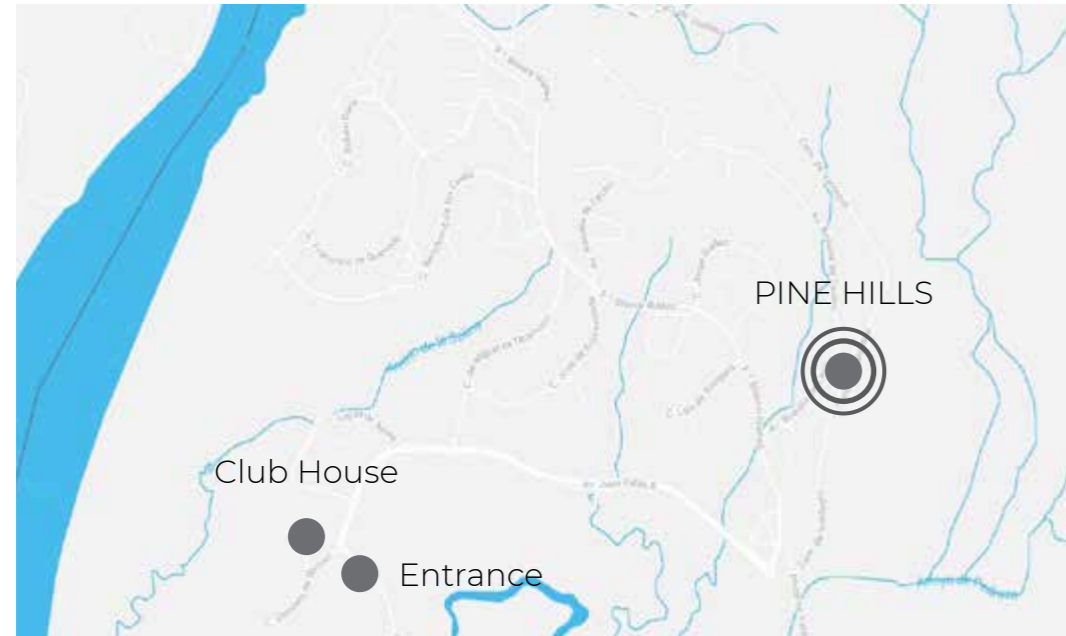


PINE HILLS

Two exclusive plots surrounded by breath-taking nature.
Opportunity to choose from different designs in different price ranges.
Private, secure area with excellent infrastructure.

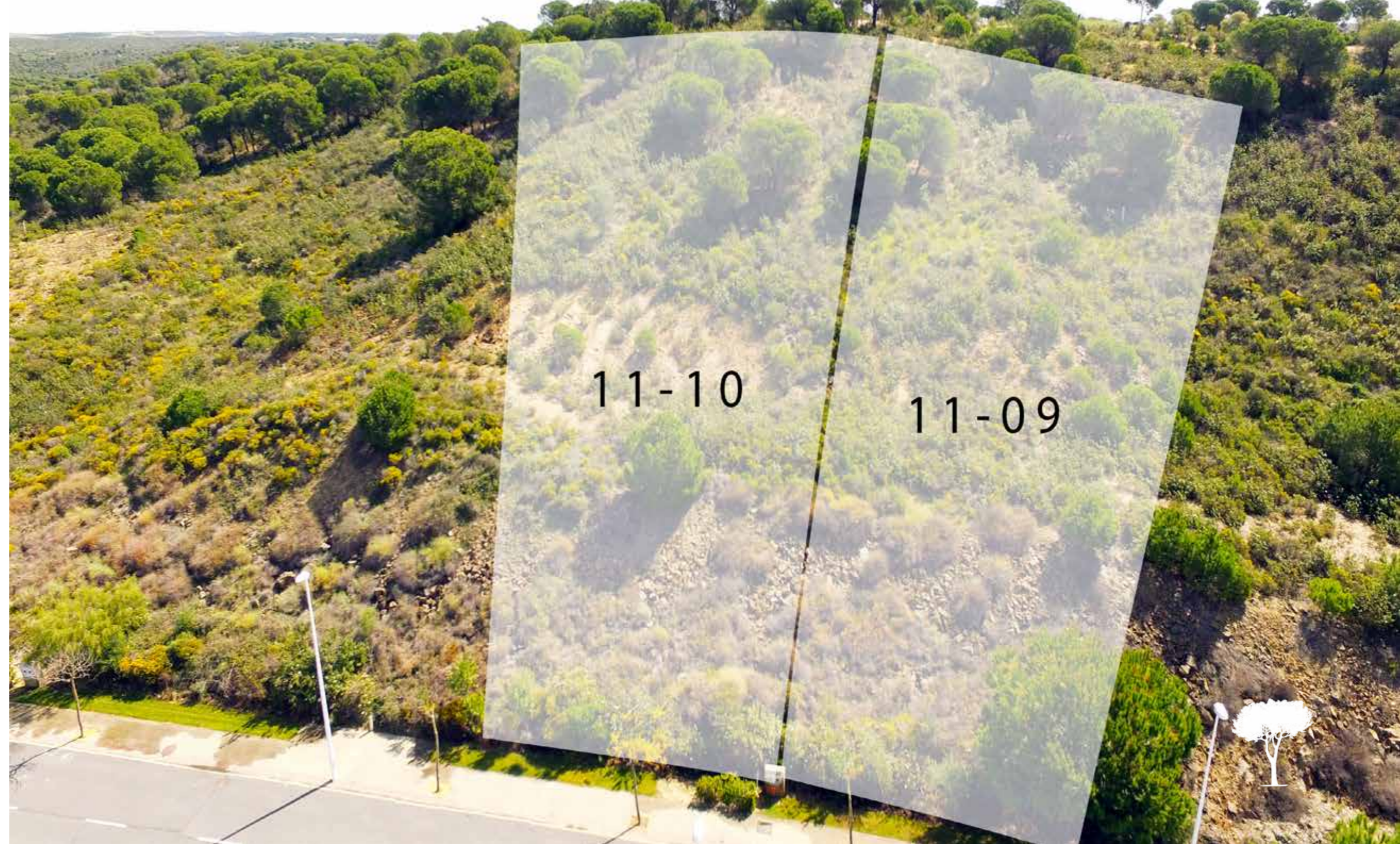


Costa Esuri Map



The elevated location of the project insures interupted views.

The area is covered in emblematic stone pine trees giving the name of the development.



PINE HILLS

Type A*



PINE HILLS

Type A*



Front View

PINE HILLS

Type A*



Entrance

PINE HILLS

Type A*



The Design

We take a pride in the practicality of our homes – ensuring that all of life’s most basic requirements have been considered from the outset - cutting edge architecture, artistic design, high quality materials, private gardens and swimming pool.

Sizes in m²

Plot size	1.311
Interior Space	133
Exterior Space	67
Pool	18
Total	218



PINE HILLS

Type B*



PINE HILLS

Type B*



Entrance

PINE HILLS

Type B*



Front View

PINE HILLS

Type B*



The Design

The interior designs have been composed by an Award Winning Design consultancy to ensure that the very finest techniques and materials are applied, providing a contemporary and enjoyable environment.

Sizes in m²

Plot size	1.229
Interior Space	123
Exterior Space	46
Pool	18
Total	190



PINE HILLS

Type C*



PINE HILLS

Type C*



Front View

PINE HILLS

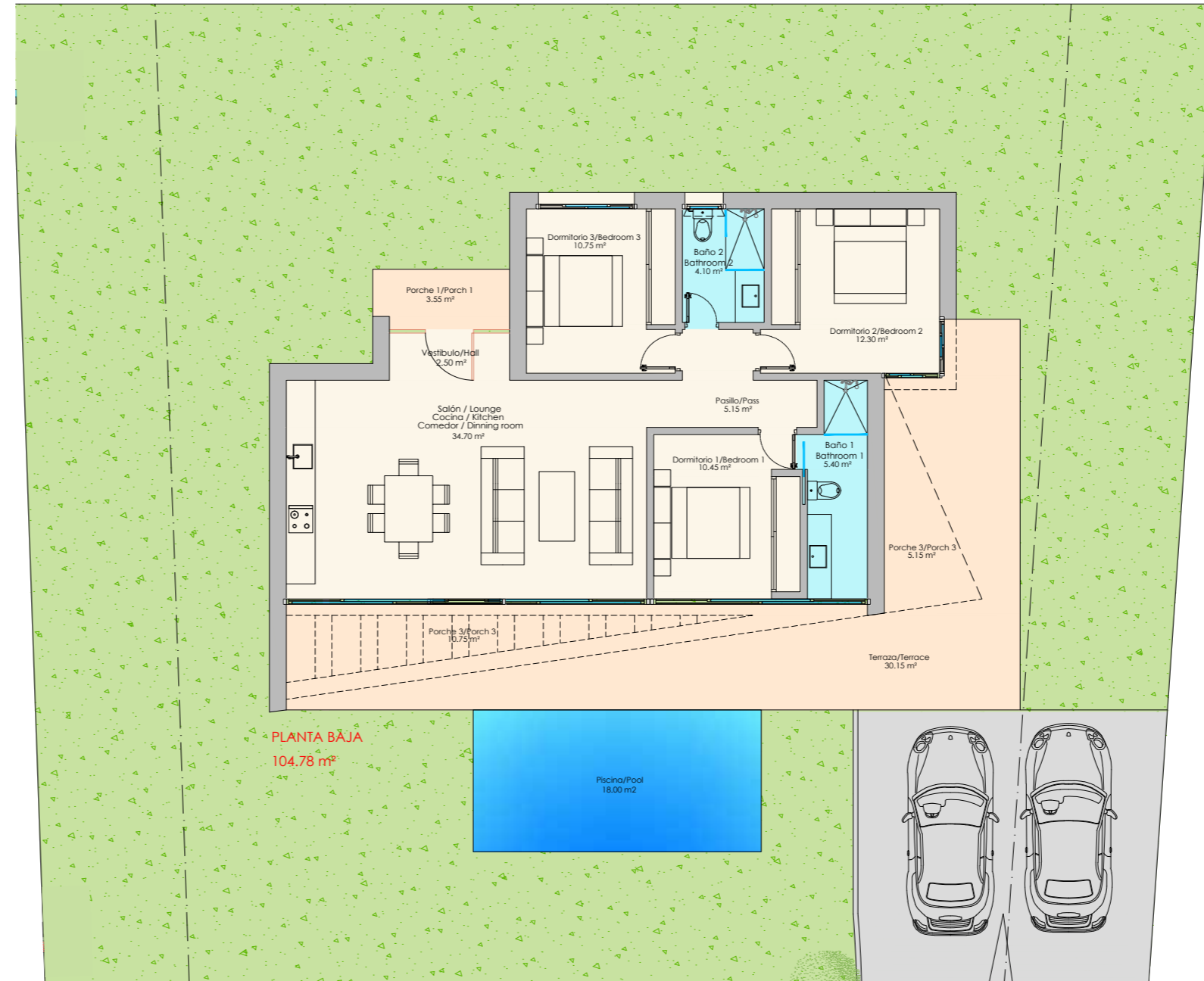
Type C*



Entrance

PINE HILLS

Type C*



The Design

This villa cleverly contrasts state-of-the-art contemporary property designs with an ambient warmth of vegetation and lighting.

Sizes in m²

Plot size	1.229
Interior Space	105
Exterior Space	49
Pool	18
Total	172





*Disclaimer: In regard to property plans, artist's impressions, and quality specifications. All property fact sheets, m2 profiles, renders and visuals can be amended by the developer due to changes made by architects or technicians for structural reasons or technical problems resolved during the construction, and/or availability of materials.